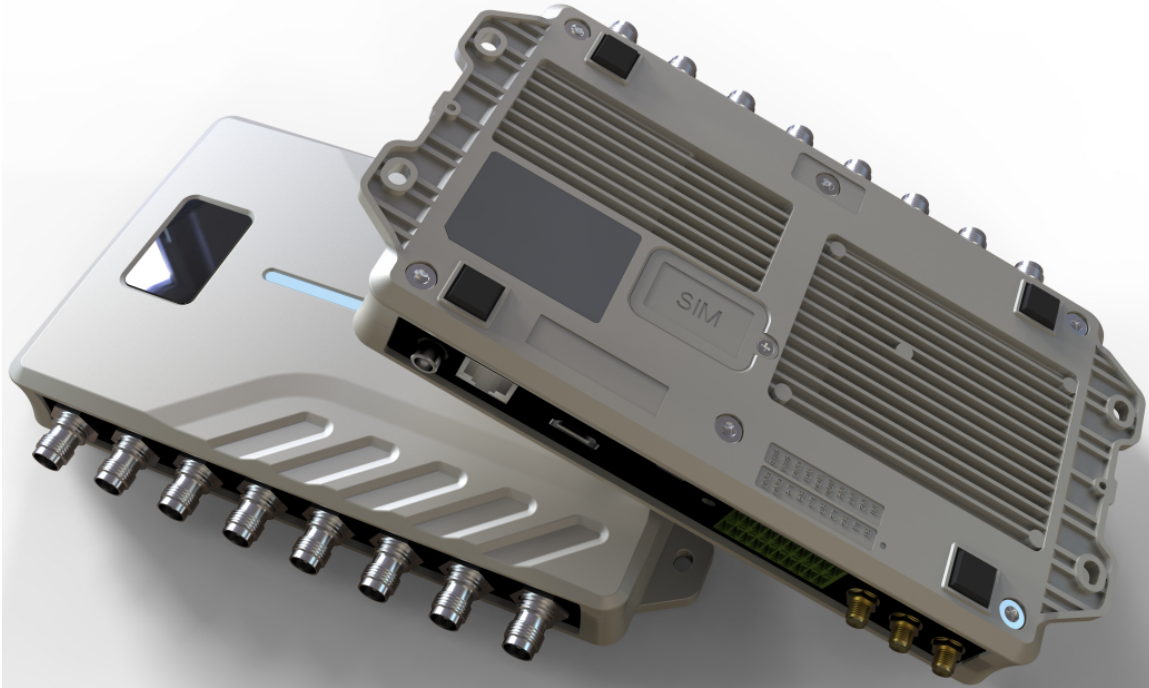


IHAL4 Smart UHF RFID Fixed Reader



IHAL4 is a Identium new designed masterpiece – IOT smart UHF RFID reader, which running with Impinj INDY R2000 high performance RFID chipset, and operated on Android 9.0 operation system. 4-Port /8-port optional.

It supports off-line working for 40,000pcs of tags since with 2GB RAM and 16G ROM capacity. It also has wireless function as WiFi, Bluetooth, 4G, with USB, RJ45, RS232 and I/O communication interfaces, POE optional. Moreover, it could be connected with monitor via the HDMI interface.

Features

- Powered by Impinj R2000 chipset for maximum tag detection performance.
- **Inbuilt Middleware Reader Management Software**
- **Android OS based open development environment**
- **Support MQTT provides real-time, reliable messaging services for connecting cloud servers**
- **Support HTTP POST communication to send the tag data to the web URL directly**
- **Support to send the tag data to the specified database directly**
- Kinds of communication interfaces: RJ45, RS485, Wiegand, USB , Bluetooth , 4G
- Industrial, installation-friendly I/O connector
- Support RSSI, antenna detection, online update
- RSSI & speed filters

Specifications

HARDWARE, OS AND FIRMWARE MANAGEMENT

Processor	MT6765, Octa-Core 2.3Ghz
Memory	Flash 16GB; DRAM2GB
Operating System:	Android 9.0
Firmware Upgrade	Demo software / Web
API Support	Android - Java

PHYSICAL CHARACTERISTICS

Dimensions	241mm×132mm×36mm
Weight	1.2Kg
Housing Material	Die-cast aluminum
Visual Status Indicators	Power/Status, Ant 1-4/8

RFID CHARACTERISTICS

Air Protocols	ISO/IEC18000-6B, 6C / EPC C1Gen2 C2GEN2 optional
Frequency	USA: 902 MHz-928MHz (FCC part 15) EU: 865-868MHz (ETSI EN 302208)
Output Power:	0dBm-35dBm (±1dBm) adjustable
Channel bandwidth:	< 200KHz
Anti-collision	Support multi-tag / intensive inventory
Work Mode:	Fixed/hop frequency optional

CONNECTIVITY

	RJ45, RS-485, OTG, Wiegand
	WiFi : 802.11 a/b/g/n/ac
Communications	4G :LTE-FDD(CAT-7)/LTE-TDD(CAT-7)/WCDMA/TD-SCDMA/ EVDO/CDMA/GSM Bluetooth : BT v2.1+EDR , 3.0+HS,v4.1+HS
General Purpose I/O	4 inputs(DC 0~24V), 4 outputs(DC_MAX:30V,2A; AC_MAX:125V,0.3A), optically isolated (Terminal Block)
Power supply	DC 24V/2.5A (DC 9V ~ 30V,60W) or POE(IEEE 802.3 af/at/bt)
Display interface	HDMI, support 720P(default)/1080P
Antenna Ports	4 Reverse Polarity TNC ports; circular or linear polarization; near and far field compatible

ENVIRONMENTAL

Operating Temp.	-20 - +70°C
Storage Temp.	-40 - +85°C
Humidity	5-90% non-condensing (+25°C)
Sealing	IP53

Outline Dimensions

